

Raidho Acoustics



*"ONCE HEARD,
NEVER FORGOTTEN!"*

A full-page background image featuring a sunset over the ocean. The sun is a bright, glowing orb positioned slightly to the right of the center, partially obscured by the silhouettes of tall, thin grasses in the foreground. The sky is a gradient of warm colors, from deep orange near the horizon to a lighter, hazy yellow at the top. The ocean is visible in the distance, its surface reflecting the low light of the setting sun. The foreground grasses are dark and detailed, with some blades reaching upwards towards the sun.

RAIDHO – “THE JOURNEY OF LIFE”.

This journey began with a Dane inventing the dynamic driver in 1918. And we believe Raidho is about completing this path or journey to the ultimate experience in High End Audio. This inspires our approach to the ultimate. We make our own drivers and components – because nobody else does it the way we want. We build everything in-house – because the devil is in the details. The result is a range of products that are anything but ordinary; they don’t look – work – or sound like other speakers. It’s what makes them special. It’s what makes the music they reproduce simply extraordinary. Take them on your journey and you’ll experience extraordinary too.



THE RAIDHO TWEETER

Our proprietary, trademark ribbon tweeter is a unique design. It is completely designed and build by hand in-house in Denmark. To be exact, it is a Planar Magnetic tweeter due to the tracks in the foil. The foil is 11 micron thick, which means it is 50 times less mass in comparison to a conventional dome tweeter. This is because there is no voice coil and the extreme low weight of the foil (20 milligram). The result is virtually no resonances or distortion, and the breakup point is at an incredible 82 KHz! What you hear is amazing clear and natural sound. All the detail in the world, but no fatigue, no distortion, and no coloration!

The best tweeter in the world?
We will let you be the judge...



THE FACTORY

At our factory in Denmark we pride ourselves of having a very dedicated team of craftsmen. They have devoted their passion to creating the best loudspeakers possible. We spend hours and hours on each loudspeaker for it to become a piece of art. You will feel and hear this in every single Raidho construction.

One man is assembling one loudspeaker at a time. This essentially becomes his creation of passion. The finest detail is taken special care of to reach perfection. After the assembly, each speaker is being listened to and measurements are compared to the Master Reference of this model. No speaker leaves the factory without being carefully scrutinized by the heart and mind.

We produce inhouse and by local companies as much as possible to get the quality we want and the passion we need. Only this way can we continue the legacy of Raidho.

When we design a new loudspeaker model, we set ambitious goals and then design and build the specific parts to reach the goals for this model. No essential part is picked from a brochure. All is custom made to make unique creations.

THE RAIDHO SOUND EXPERIENCE

When you listen to a pair of Raidho speaker you experience music with no coloration of the sound. Music will be very easy to listen to because it just sounds so natural and right. Choose any type of music you like, and the loudspeaker evolves into the perfect one for just this type of music. Raidho, let's you step into the music and provide you with the most unique holographic sound experience. You will sense the music in the room, coming to you from all directions. It will appear right out of the blue, with no hint of where the loudspeakers are positioned. You can hear every little ounce of detail in the recording, but never experience any listening fatigue. Music will appear with all the drama, energy, and drive to let you flow with the music. The Raidho loudspeaker is a master of seduction. It will trick you into forget time and space and transport you to an authentic and musical event. A mesmerizing experience.

Find a dealer or distributor near you:





THE X SERIES



This entry level series at Raidho is in no way entry level when it comes to technology, performance and visual beauty. It is about providing the listener maximum performance for the "e". In fact every X model uses a slightly scaled down version of the tweeter that sits in the EUR 210.000 statement speaker. The TD6. How is that for value?

The visual design of this series is one of beauty. All models fits discretely into any home. The floor-standing speakers have elongated wing shape, curved side panels, with bass reflex ports that looks like no other. The stunning beauty continues on the inside:

THE WOOFER

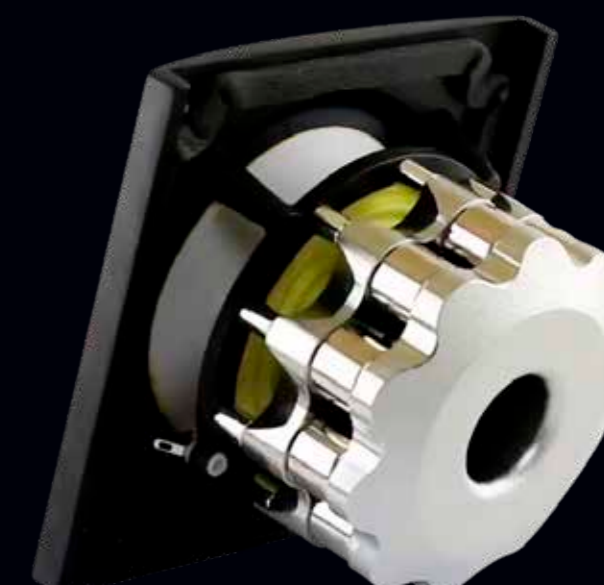


This drive unit is not only highly advance and build inhouse in Denmark, but is also a piece of art.

Raidho's Ceramix technology starts with a thin, aluminum cone and then uses a liquid plasma process and incredibly high-voltages to transform the outer skin of the metal to aluminum-oxide ceramic. It's a time-consuming and costly process, but the finished cone is a unique, natural sandwich, with thin, stiff skins on either side of a 'softer' aluminum core, creating a structure that is stiffer than a pure ceramic cone but with excellent self-damping. Breakups first enters at an incredible 12.5kHz.

The motor system consists of strong neodymium magnets focused around a very open system, allowing ventilation to the driver with the benefit of cooling the titanium voice coil and to remove part of the design that usually causes distortions.

The result is that the speakers disappear even more from the equation, drawing a soundscape without audible distortion and with a pitch-black background that made the instruments stand out and create holographic soundstage.





X1t

The new X1t is based on the classic super mini monitor, the X1. This revised version seeks to pack as much performance as possible into a very small form factor. And finally, at a relatively low "e", in comparison to performance. Welcome to the new reference in super mini monitors.

In comparison to the standard X1, better components have been implemented resulting in more open and clear sound. The enclosure has further been redesigned internally meaning the airflow and bass reflex port provides much higher bass output and quality.

The t in X1t means Tantalum. Tantalum belongs to a class of metals known as refractory metals, which are defined by their strong resistance to heat and wear. It has a melting point of 2,996 °C, the fourth highest of all metals. This makes the membrane much stiffer and harder without adding any weight and thereby raising the breakup modes to an incredible 15kHz.

We can make this speaker sound amazing in 80 m² rooms, but in order to get proper bass, we recommend no larger than 25 m².

Optional stand: Single Stand white and black.

SPECS:

Topology	2 way
Bass Loading	Vented design. Port in front panel.
Drivers	1 x Raidho Ribbon tweeter 1 x 5,25" Raidho Ceramix driver
Crossover Point	3,5 KHz
Frequency Range	70 Hz – 50 KHz +/-3 dB
Sensitivity	85 dB 2,83 V/m
Nominal Impedance	>6 Ohm
Power Requirement	>50 W (Though we have seen excellent results with small tube amplifiers)
Finish	Black piano and White piano
Dimensions WxHxD, mm	143 x 315 x 230
Weight, kg	8

Quote

” HIGH PIG AT THE HIGH END SHOW 2022:

"The Raidho X1t Super Mini Monitor are a small speaker with a huge soundstage and even delivered on the promised 'holographic' sound as you became immersed in the choral music."

"And the "e for these speakers? 5,800"...not cheap but they deliver on the Raidho sound promises at a fraction of the cost of some of their bigger siblings."

Quote

” I-FIDELITY.NET AT THE HIGH END SHOW 2022:

"The new Raidho X1t is based on the classic super-mini monitor, the X1. This revised version sets new standards for how much performance is possible is possible to get from a very small package."

Quote

” FIDELITY-ONLINE.DE AT THE HIGH END SHOW 2022:

"A surprise awaited the audience at Raidho. When entering the room and listening to the small X-1T compact speaker, one thought that the music was being reproduced by the TD6 column speaker standing right next to it. Chapeau - seldom has such a small speaker sounded so grown-up and full-bodied."

Quote

” I-FIDELITY:

"That's what I call magic realism! The X1t is magical because it makes music so realistically. It conveys the magic of music reproduction as if it were the first time. Even a hardened listener will not be able to escape the spell of this compact, its dimensions seem to make a mockery of the size of the sound image. In fact, the Raidho wins in almost all categories: In terms of naturalness and color fidelity, speed, effortlessness, dynamics and spatiality, it is unparalleled, and that at an excellent "e-performance ratio. The X-series is Raidho's entry-level range - I can't even imagine what the top models sound like."

AWARDS:





X1.6

The all new X1.6 is wonderful new addition to the Raidho X series. This is Raidho's take on making a high performing compact speaker in this highly competitive "e" range. The X1.6 will deliver a performance unseen in this class. It is the first time Raidho offers a 6,5" in this form factor and "e".

The front baffle is made of cast aluminum that is an impressive 20 mm thick. This heavy-duty construction is normally only seen in super High End loudspeakers. This makes for the perfect foundation to place the Raidho Ribbon tweeter and the 6,5" Ceramix bass driver.

The X1.6 has an unbelievable open and transparent sound which can only come from the famous Ribbon tweeter. But the bass performance and power by this small loudspeaker is just as impressive.

Prepare to be amazed with the new X1.6.

AWARDS:



SPECS:

Topology	2 way
Bass Loading	Vented design. Port in the rear.
Drivers	1 x Raidho Ribbon tweeter 1 x 6,5" Raidho Ceramix driver
Crossover Point	3,5 KHz
Frequency Range	45 Hz – 50 KHz +/-3 dB
Sensitivity	87 dB 2,83 V/m
Nominal Impedance	>6 Ohm
Power Requirement	>50 W (Though we have seen excellent results with small tube amplifiers)
Finish	Black piano and White piano
Dimensions WxHxD, mm	200 x 360 x 300
Weight, kg	10,5

Quote

6MOONS:

"I can't quickly think of a sub EUR 10k speaker that depicts metal percussion so relaxed, airy and microdynamically differentiated. What a sensual feast regardless of whether we listen very loud or quiet. The X1.6 expressed this rare quality so nonchalantly that its analytical chops only became apparent when I focused down to now find resolution virtually sans pareil in this class. It almost pains me to say but when it came to sheer overwhelming detail density with minimal stress, even the beryllium tweeters of Magico's A1 could still lean from Raidho's planar. They were so silky, fragrant, clear and teased out that even an experienced reviewer still gets goosebumps. How open, free and airy Raidho's foils tracked the swirling bells of Erika de Casier's "Plite" across the room was impressive, too. Hardly any other tweeter I know manages so light-footed and weightless and certainly non in this range."

Quote

LITE MAGAZINE:

"The Raidho Acoustics X1.6 is a speaker that has no equal. It clearly shows what passive technology is capable of and sets standards in sound quality. Instruments can be located excellently, vocals sound phenomenally present and the crisp and playful bass is an absolute highlight. The workmanship is impeccable, which is also made clear by the five-year warranty. Nevertheless, I would have wished for a bit more scope of delivery like a front panel. Perhaps Raidho will add accessories at some point. The "e" is just as high as the sound, since we are in the reference class here. But if you're looking for a slim speaker with excellent sound, you'll certainly want to take a closer look at the X1.6's sound. It fully met my taste and I strongly recommend listening to it at least once and never forgetting it again."

Quote

HIFI4ALL.DK:

"My feeling is that because Raidho makes their units from scratch, they have more control over the rest of the construction when they make their speakers. And therefore the compromise is also that much smaller...I am nothing short of impressed by how much sound comes out of these - after all - small speakers. And they are in no way in the shadow of floor speakers in general when it comes to weight and size in the music.I am shocked!!!!... Raidho X1.6 is "Editors Choice"!"

X2t 25'th Anniversary

Celebrating 25 years of sonic excellence, the X2t Anniversary Edition is a collector's loudspeaker designed for connoisseurs of both sound and design.

OVERVIEW:

- Based on the X2 platform, one of Raidho's most successful models to date
- Only 100 pairs produced worldwide – each uniquely numbered and certified
- Updated crossover network for refined musicality and accuracy
- Premium Furutech binding posts for enhanced signal transfer

Special high-gloss finishes: Walnut Burl, Emerald Green, and Midnight Blue.

A Raidho special among floor standing loudspeakers is also the use of 2,5-way construction. The two 5,25" bass driver units in the new X2t, now has the Tantalum coating. Tantalum belongs to a class of metals known as refractory metals, which are defined by their strong, hard and stiff. Perfect for cone material.

The nonlimited version of the X2t is available parallel to the limited 25th anniversary edition.

Quote

AUDIO TEST:

"The Raidho X2t turns out to be a true sound delicacy on the highest level in our test. Measured by the installed premium technology in all segments and combined with an irreverently exclusive design, the called 14000 euros per pair are a real bargain. Insider tip: Buy now!"

Quote

STEREOPHILE:

"I was blown away by the sound. How Raidho manages to produce such an extreme, seeming full range sound from a floorstander as diminutive as the X2t ("14,000/pair) I do not know. But perhaps its planar-magnetic tweeter, which is almost the same as in the much larger TD6, has something to do with it."

Quote

SOUNDNEWS:

The show-stopper wasn't the TD6 which sounded deliciously natural, super tight, impactful, and massive as they look. The real show-stopper was the newest X2T stand floor speakers which looked puny by comparison. The funny thing is that after listening to music for 10 minutes, Morten approaches and tells the crowd that it's time to hear the roar of the mighty TD6...which everybody in the room thought was playing in the first place. The scale of the X2T was mind-blowingly large! They had Mariana Trench levels of depth, accurate pin-point imaging, and a vast soundstage, plus speedy dynamics and quite an impressive low-end delivery. At ~14K EUR these could be some of the best speakers out there. There was of course a difference between them and their high-end TD siblings, but the difference wasn't a night and day one as their "e might suggest. Mark my words: These will sell like hotcakes!

X2t AWARDS:



SPECS:

Topology	2,5 way
Bass Loading	Internal vented design. Ports in rear.
Drivers	1 x Raidho Ribbon tweeter 2 x 5,25" Raidho Ceramix driver
Crossover Point	220Hz and 3.5 kHz 2nd Order
Frequency Range	45 Hz - 50 kHz +/-3 dB
Sensitivity	88dB 2,83 V/m
Nominal Impedance	6 Ohm
Power Requirement	50 - 150 W
Finish	Black and White or custom color
Dimensions WxHxD, mm	300 x 1065 x 415 including feet
Enclosure WxD, mm	125 x 380
Weight, kg	23



X2.6



Raidho Acoustics, renowned for pushing the boundaries of audio engineering, proudly announces the world premiere of their latest offering in the X series. The X series stands for eXtreme performance for the price. Of course, these are not cheap products, by any standard. But the brand new X2.6 features a tweeter that is derived from the TD 6. A EUR 230.000 statement speaker. It is also built inhouse in Denmark with drive units that are built by hand.

The Goal

The ambitions of the X2.6 are basically the same as any Raidho speaker. We try to achieve:

- Extremely low level of noise / coloration of the sound
- Dramatic, energetic sound with a very wide soundstage
- Hear every detail, but no fatigue
- Very easy to listen to
- A unique sonic holography
- The sound appears right out of the blue
- Very authentic and close the original

Quote

” ROBERT HARLEY:

“The X2.5 simply disappeared as a sound source, filling the large room with a wide, deep, highly defined soundstage populated with tangible images. The X2.6 shared the stage with the mighty TD6 (\$210k euros). Based on the X2.6’s huge soundstage, one could believe that the TD6 was playing, not the smaller speaker. The X2.6’s bass was more than adequate to fill the big room. On a price-to-performance basis, the 21,000 euro Raidho X2.6 was one of the show’s most remarkable debuts.”

Best Sound at the Munich Show 2024 (Cost considered)

SPECS:

Topology	2,5 way
Bass Loading	Vented design. Ports in rear.
Drivers	1 x Raidho Ribbon tweeter 2 x 6,5 Raidho Ceramix drivers
Crossover Point	140 Hz and 3.5 kHz
Frequency Range	35 Hz - 50 Khz -3dB 32 Hz - 50 Khz -6 dB
Sensitivity	85dB 2,83 V/m
Nominal Impedance	6 Ohm
Power Requirement	> 100 W
Finish	Black piano and White piano
Dimensions WxHxD, mm	360 x 1065 x 415 mm including feet
Enclosure WxD, mm	165 x 350
Weight, kg	30

The Bottom End

The loudspeaker rests not on spikes, but on a very smartly constructed feet with integrated decoupling. This speaker itself stands on ceramic balls which are not visible from the outside. This setup works wonders for the sound but does not damage the floor. The beautifully integrated bass reflex ports are possible to dampen so the bass does not overpower smaller rooms. The connections may look small and inferior, but are actually designed to give the best possible contact to your cables and the crossover.

Where cutting-edge audio meets modern art

Together with artist Carsten Beck the Raidho X2.6 Limited Collection was created. Hand-painted, each speaker is a unique piece, blending Beck’s minimalist, architectural style with Raidho’s world-class sound. Designed in close collaboration with the Raidho team in Denmark, every pair features distinct black-and-white geometric designs. Each pair of the 25 pairs made is both a visual and acoustic masterpiece.

AWARDS:





THE TD SERIES



The TD-series are true destination loudspeakers. They are highly advanced, but this is not only about technology. This is about music and the expression of the art form. Listening to a TD-series speaker you will experience all of the emotions of the music. An authentic and holographic sound will embrace you, transporting you to the origins of where the music was recorded.

THE CROSSOVER

The heart of every loudspeaker is the crossover. As they are often tucked away inside the speaker, they do not always deserve the light of day. But in the case with Raidho, and especially for the TD series, the crossovers are small or even large pieces of art. The use of Mundorf components is extensive and how they are mounted and put together is jaw dropping. They are hardwired, point to point and done completely by hand. The cables that is used to bind all the components together is Nordost cables. Even in the crossover itself! This is a true testament to how far Raidho is willing to go in pursuit of the ultimate in every detail.



TD RIBBON TWEETER

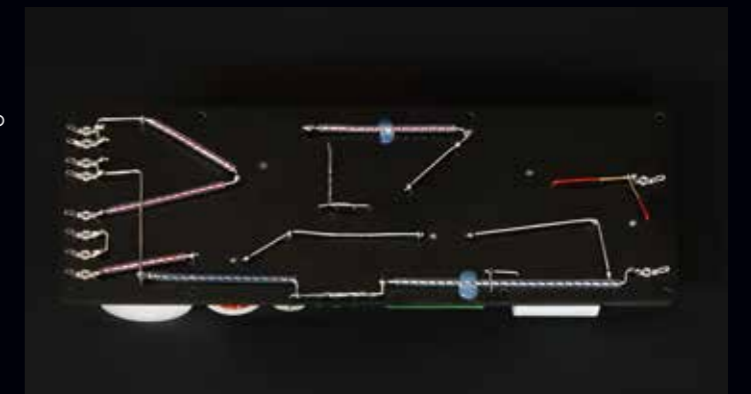
For the TD-series, we looked at how we could improve the tweeter to match the new drivers. A redesign of the magnets, waveguide, and rear panel to optimize airflow, helped us to raise the sensitivity by 3 dB, and reducing the already low levels of distortion by 35 dB. This raised the level of performance further, making our world class tweeter even better.

INTERNAL WIRING

All of the internal wiring inside the speaker is done with High End Nordost cables using the famous Monofilament structure. The standard is the Norse technology, but it is also possible to upgrade it to TSC from the Odin line.

CUSTOM CABINET COLOR

For the TD series it is possible to order the cabinet in your personal color to make the loudspeaker completely unique. All colors are possible as long as there is a color code for it.



THE TD DRIVE UNITS



This is truly a unique and revolutionary drive unit! 100% developed and build inhouse by Raidho. The goals was simple: no coloration and outstanding dynamic capabilities.

The motor comprises of a very strong magnet (N52 Neodymium) with an unseen even magnet field, coupled with an underhung titanium voice coil. This arrangement gives the drive unit the most powerful underhung magnet system in the world. The benetfit from an underhung voicie coil over the traditional overhung, is that it is much more linear and better dynamic capabilities. The result is perfect transient response with no measurable distortion.

To enhance the strength of the magnetic motor even further, we designed a new titanium voice coil using square shaped wire that eleminiates air in the voice coil windings. Leaving no possibility for air gaps to interfere with the magnetic field.

The complete magnet system, as well as the basket itself is shaped like a turbine which eliminate any sound reflections, which would otherwise smear the original sound.

The solid coppering over the inner polepiece very effectively minimize inductance and linearizes impedance.

The suspension parts are as soft as possible to insure as little mechanic restraints to movement of the diaphragm. Finally, a drive unit that can truly keep up with the Raidho ribbon tweeter and make it all sound as one.

Read more in depth about Raidho technology on raidho.dk





THE TD MEMBRANE

This is a truly unique and revolutionary membrane. We came across this together with the Danish Technical Institute in the pursuit of the ultimate material for loudspeaker membranes. We believe we found it!

The membrane is a 5 Layer sandwich construction. On top of aluminum and the ceramic layer is a so-called Tantalum layer. The last layer is artificial diamond. 1,5 Carat of diamond is applied to each membrane, yet only 10 microns thick.. All these materials bring in their own strengths to the mix, making this a truly unique and revolutionary drive unit.

The Ceramix membranes are placed in highly specialized machines where they pump in argon gas and fire particles at lightspeed thus fixating the atoms to the membrane. This creates the Tantalum and Diamond coating. The TD layers reduce resonances with 36dB over ceramic and is 50 times stiffer than ceramic only membrane. The breakup mode has been elevated to 20KHz! Raidho is the only loudspeaker manufacturer in the world to use this technology.

See more about the production process on our YouTube channel





TD1.2



If you were only to judge this speaker by its size, you would be fooled. The TD1.2 has a personality that think it is twice the size.

If you want the same performance as the TD1.2 in a floorstanding loudspeaker you would have to pay a lot more. Because the same money would have to go into a bigger enclosure, more drivers and a more complex crossover. This means that the performance from the TD1.2 is actually outrages in this "e" class.

If your room is below 30 m2, you will get to High End heaven with the TD1.2. Musical immediacy, resolution and dynamics like never before from a small speaker. The TD1.2 is the one to beat with staggering performance wrapped in a very elegant and stylish look.

Optional stand in silver and black.



SPECS:

Topology	2 way
Bass Loading	Bass reflex. Port in rear. Impulse optimized.
Drivers	1 x Raidho TD Ribbon tweeter 1 x 6,5" Raidho Tantalum Diamond midbass
Crossover Point	2.4 Khz stepped slope
Frequency Range	45Hz - 50 kHz +/-3 dB
Sensitivity	87dB 2,83 V/m
Nominal Impedance	6 Ohm
Power Requirement	25 - 125 W
Finish	Black piano, Walnut burl veneer or any colour to order
Dimensions WxHxD, mm	200 x 360 x 400
Enclosure, WxD, mm	270 x 155
Weight, kg	13

Quote

HIFI STATEMENT:

"Wow - what a speaker! Detail, workmanship and the sonic result set new standards."

Quote

HIFI PLUS:

"Listen and you might discover hidden musical gems in the most unlikely places; listen and you might just discover the heights a great guitarist can reach in terms of musical expression."

Quote

THE ABSOLUTE SOUND:

"The TD1.2 is the highest-performing, small, stand-mounted two-way loudspeaker I have heard—and I have heard some of the best. Its winning combination of exceptional overall resolution, expansive soundstaging, and musical swing in the form of lightning-fast and robust dynamics is just wonderful. This is a speaker for the two-way enthusiast who is willing to acquire the best of breed."

AWARDS:



A Raidho special among floorstanding loudspeakers is the use of 2,5 way construction. This guarantees a very coherent sound from top to bottom as both drive units puts out bass, but only the upper does midrange.

Topology	2,5 way
Bass Loading	Bass reflex ports in rear. Impulse optimized
Drivers	1 x Raidho TD Ribbon tweeter 1 x 6,5" Raidho Tantalum Diamond midbass 1 x 6,5" Raidho Tantalum Diamond bass
Crossover Point	400Hz and 2.4 kHz stepped slope
Frequency Range	32Hz - 50 kHz +/- 3 dB
Sensitivity	88dB 2,83 V/m
Nominal Impedance	6 Ohm
Power Requirement	50 - 150 W
Finish	Black piano, Walnut burl veneer or any colour to order
Dimensions WxHxD, mm	315 x 1150 x 505 including feet
Enclosure WxD, mm	200 x 505
Weight, kg	45

● THE ABSOLUTE SOUND:

"The TD2.2 is a very musically involving speaker. From its crystal clear, fatigue-free treble and midrange down to its fabulously robust bass, the TD2.2 has a wonderful combination of detail retrieval, tonal richness, and solid musical foundation. Music shines vividly and evocatively through the Raidhos and invites you to listen and listen some more. Recommended."

● **I-FIDELITY.NET:**

"The easily countable group of dream speakers gets a profound addition: the Raidho TD2.2 is joining the illustrious circle. Soundwise it excels by its holographic reproduction, inner coherence and a wonderfully detailed imaging that's largely due to the sophisticated in-house designed drivers."

Test result: Outstanding

HIFI PIG:

"The easily countable group of dream speakers gets a profound addition: the Raidho TD.2 is joining the illustrious circle. Soundwise it excels by its holographic reproduction, inner coherence and a wonderfully detailed imaging that's largely due to the sophisticated in-house designed drivers."



TD3.2



The beautiful looks of the TD3.2 holds a 3-way speaker that can deliver real life dynamics and authentic sound that is as live and true as the artist wanted it to be. This model has the power to surprise with both looks and sound.

The TD3.2 is capable of delivering a huge soundstage with authentic and organic sound that really captures the listener. A true 3-way design built upon our new drivers including the 5" midrange used in the TD3.8, and the updated TD-ribbon tweeter.

Decoupling of the speakers is integrated into the feet. So, there is no need for spikes to achieve the best result, because this is actually done with ceramic balls, on which the speakers rest on.

The TD3.2 has its own dedicated 5" midrange drive unit which sits in its own enclosure. The result is much more transparency and detail in the very critical midrange band.



SPECS:

Topology	3 way
Bass Loading	Bass reflex ports in rear. Impulse optimized.
Drivers	1 x Raidho TD Ribbon tweeter 1 x 5" Raidho Tantalum Diamond midrange 3 x 6.5" Raidho Tantalum Diamond bass
Crossover Point	400Hz and 2.4 kHz stepped slope
Frequency Range	28Hz - 50 kHz +/-3 dB
Sensitivity	90dB 2,83 V/m
Nominal Impedance	4 Ohm
Power Requirement	50 - 300 W
Finish	Black piano, Walnut burl veneer or any colour to order
Dimensions WxHxD, mm	315 x 1235 x 505 including feet
Enclosure WxD, mm	200 x 505
Weight, kg	55

AWARDS:





TD3.8



The TD3.8 is built around two of our new 8" drivers, similar the ones in the mighty TD6. That means that the drivers can reproduce stunning dynamics and as the TD3.8 is a full-range system reaching down to 23 Hz, this speaker. This will entangle you in the roots of the music, full of authentic, real-life dynamics that is as live and engaging as going to a concert.

The midrange is handled by two 5" drive units. They are placed in a MTM configuration to further lower distortion, lower crossover points and control the dispersion. The lower distortion and broadband performance will reveal every layer of music to you.

The massive crossover is placed in the bottom, and all acoustical treatment inside the TD3.8 is carefully measured and matched for absolute performance. The crossovers them selves are pieces of art, that deserves the day of light.

The TD3.8 is the one to beat in this class. The power and magnitude is equally matched with timing, phase and coherency in a full-range design that is musically authentic, real and extremely convincing. Audition the TD3.8 and discover what you have been missing...

SPECS:

Topology	3 way
Bass Loading	Bass reflex ports in rear. Impulse optimized.
Drivers	1 x Raidho TD Ribbon tweeter 2 x 5" Raidho Tantalum Diamond midrange 2 x 8" Raidho Tantalum Diamond bass
Crossover Point	400Hz and 2.4 kHz stepped slope
Frequency Range	24Hz - 50 kHz +/-3 d
Sensitivity	89dB 2,83 V/m
Nominal Impedance	6 Ohm
Power Requirement	50 - 300 W
Finish	Black piano, Walnut burl veneer or any colour to order
Dimensions WxHxD, mm	440 x 1420 x 620 including feet
Enclosure WxD, mm	250 x 620
Weight, kg	83

Quote

POSITIVE FEEDBACK:

"To say that my first couple of months with the TD 3.8s was splendid would be a gross understatement. It's rare that I have been so pleased and impressed with a new loudspeaker design."

Quote

ENJOY THE MUSIC:

"Very highly recommended, with a cherry on top!"

Quote

THE ABSOLUTE SOUND:

"The TD3.8s have some of the smoothest and most musically natural timbre I've heard, and are remarkably consistent from the lowest-level passages to the loudest, and do not vary as the music becomes more complex."

AWARDS:





TD3.10



The TD3.10 isn't just the successor to the acclaimed TD3.8—it's Denmark's newest icon in high-end audio, reaffirming the nation's leadership in sonic innovation. Based on the TD3.8 platform, it introduces 10" diamond-coated bass drivers—the largest ever used in a production speaker—delivering bass extension down to 20 Hz with exceptional precision and control.

A meticulously engineered three-way crossover uses second- and fourth-order slopes at 240 Hz and 2.7 kHz, employing custom filter techniques developed by Raidho. Mundorf High End components, air-core inductors, and polypropylene capacitors ensure ultra-low distortion, while Nordost Norse internal wiring guarantees pure signal transmission.

The MTM (midrange-tweeter-midrange) configuration

tightens vertical dispersion and improves off-axis response, yielding a lifelike, coherent soundstage with astonishing realism and detail.

Housed in a luxurious walnut burl cabinet, each speaker begins with rare, hand-matched veneer "flowers" laminated onto curved CNC-milled panels for optimal resonance control. The cabinets undergo eight precision sanding stages and receive sixteen layers of high-gloss lacquer, resulting in a flawless mirror finish. Every veneer panel is serialized, ensuring perfect left/right speaker pairing and unmatched visual consistency.

The TD3.10 delivers not just breathtaking sound—but also visual and material craftsmanship of the highest caliber.



SPECS:

Topology	3-way bass-reflex tower
Drivers	1 × Raidho Planar-Magnetic Ribbon Tweeter 2 × 5.25" TD Midrange 2 × 10" TD Bass Drivers
Crossover Point	240 Hz, 2,7 kHz
Frequency Range	20 Hz – 50 kHz (±3 dB)
Sensitivity	89 dB (2.83 V/1 m)
Nominal Impedance	4 Ω
Recommended Amplifier	50 - 300 W
Dimensions WxHxD, mm	485 x 1520 x 700 (incl. spikes)
Weight, kg	105 each



TD4.2



The TD4.2 is first in the TD line with a true MTM configuration. This symmetrically build extends all the way to the bass. TD drive units makes the speaker engulf you in a holographic landscape of sound.

With multiple bass driver it may produce the same volume and go as deep as much bigger woofers, just with much better impulse response resulting in a very dynamic and articulate sound. This also makes it possible to keep the front plate slim, thereby reducing diffraction. This adds to a wide and precise sound stage.

The sound is authentic and live, and TD4.2 will deliver musical experiences from the smallest, intimate performances and to the biggest bands, with impact, dynamics, and musical scale in the most convincing of ways.

SPECS:



Topology	3 way
Bass Loading	Bass reflex ports in rear. Impulse optimized.
Drivers	1 x Raidho TD Ribbon tweeter 2 x 5" Raidho Tantalum Diamond, midrange 4 x 6.5" Raidho Tantalum Diamond, bass
Crossover Point	400Hz and 2.4 kHz stepped slope
Frequency Range	25Hz - 50 kHz +/-3 dB
Sensitivity	88dB 2,83 V/m
Nominal Impedance	6 Ohm
Power Requirement	50 - 300 W
Finish	Black piano, Walnut burl veneer or any colour to order
Dimensions WxHxD, mm	440 x 1585 x 600 including feet
Enclosure WxD, mm	200 x 600
Weight, kg	64

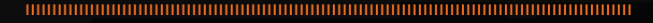
Quote

” ENJOY THE MUSIC AT THE AXPONA 2019:

“This system offered frighteningly realistic texture to voices, with a sense of both space and body that was chillingly credible, with instruments recreated in remarkably realistic size, texture, and tone. And for a speaker with such a narrow footprint, it created a sense of dynamism you would not necessarily expect at first encounter. Microdynamic expressiveness was stellar, approaching the best I’ve yet heard.”



AWARDS:





TD6



The TD6 is a truly unique musical performer and intended for those who wish to come as close to the “real thing” as possible. Even though it looks very similar to the highly acclaimed D5 and D5.1. The TD6 is a completely new development, only parts of the visual appearance look close to the previous models.

The modular build cabinet system is capable of delivering unprecedented low-frequency clarity and speed, natural tonality, and texture. It’s the foundation that allows the TD6 to bring performers and their performance to life; the energy from a bowed double bass or the crisp snap of a snare drum; the searing edge of a scintillating guitar solo or the whisper of the most intimate vocal; that let’s you feel the music as well as hear it. The TD6 is the one that does it all.

TD6 version of the tweeter, the foil itself has been upgraded to be able to handle even more power and higher dynamics.

It is a large and highly sophisticated loudspeaker, but at Raidho we prefer to think of our flagship as a musical time machine. Choose a concert – any concert – and the TD6 can take you there.

The TD6 seduces the listener. You are transported to another time and place and forget everything else around you. This is truly a world class reference speaker.

SPECS:



Topology	3 way
Bass Loading	Vented design. Six ports in the rear.
Drivers	1 x TD6 Ribbon tweeter. 2 x 5” Tantalum Diamond midrange drivers 6 x 8” Tantalum Diamond bass drivers
Crossover Point	350 Hz and 3 kHz 2. order
Frequency Range	21 Hz – 50 KHz +/-3 dB
Sensitivity	87 dB 2,83 V/m
Nominal Impedance	8 Ohm
Power Requirement	>100 W
Finish	Black piano, Walnut burl veneer or any colour to order
Dimensions WxHxD, mm	590 x 2100 x 810 including feet
Enclosure WxD, mm	250 x 680
Weight, kg	130

Quote

” SOUNDSTAGE GLOBAL AT THE HIGH END SHOW 2022:

“The soundstage was immense and enveloping. This system offered staggering levels of detail, slam, power, and bandwidth, while dynamic range was off the scale. Once heard, never forgotten.”

Quote

” ENJOY THE MUSIC AT THE HIGH END SHOW 2022:

“Even the crossover is extreme with the elements connected using Nordost cable behind the board, not something I’ve ever encountered before. The sonic result was suitably room-filling and the bass was on the next level even by the standards of high-end luxury audio.”

Quote

” HIFI PIG AT THE HIGH END SHOW 2022:

“A truly stunning speaker, they did not disappoint during listening. The stand out track was a live version of Kraftwerk’s ‘Radioactivity’. Electronic music showed of the speed of the drives and the sound even seemed to come from around and behind you when sat in the sweet spot in the GamuT chair.”

AWARDS:



TD8 + TD10 SUB

Raidho Acoustics presents the world's first subwoofers with diamond-coated drivers. The subwoofers redefine what bass can be—tight, tuneful, and uncompromisingly high-end.

Designed for audiophiles who demand both precision and power, these subwoofers feature Raidho's proprietary diamond-coated Ceramix drivers. Each model is engineered for seamless integration with any high-resolution system—delivering low-end performance that's as musical as it is visceral.

These new subwoofers do not look like most other subwoofers. At Raidho we did want to fall into the usual trap of having a very small cabinet and creating a dedicated subwoofer drive unit with very high excursion, add a very large amp and then with DSP make the loudspeaker do all the things that it does want to. This will always be a compromise.

Instead, we give the perfect work conditions for our already very advanced and high-end diamond-coated drive units. In this way we can get very clean, fast and responsive bass performance.

On top of all that, we have added DSP functions, so it is possible via a PC to configure the subwoofer in any way you like. A very versatile very high-end sound subwoofer that will integrate perfectly with any Raidho speaker and most other high-end speakers.

With the TD10 it is also possible to stack them for truly overwhelming force of power.

- Features:**
- 500 W Class-D Hypex Ncore amp with very low latency
 - PC-based DSP tuning (crossover, EQ, phase)
 - Analog high-level, RCA & XLR inputs
 - Stackable enclosure for tower configurations



SPECS, TD8 SUB:	
Topology	Active subwoofer
Bass Loading	2 × 10" passive radiators
Drivers	2 × 8" active diamond-coated Ceramix
Bass Extension	25 Hz +/- 3 dB
Finish	Black piano, Walnut burl piano
Dimensions WxHxD, mm	430 x 705 x 700 mm including feet
Enclosure WxD, mm	253 x 700
Weight, kg	52

SPECS, TD10 SUB:	
Topology	Active subwoofer
Bass Loading	4 × 10" passive radiators
Drivers	2 × 10" active diamond-coated Ceramix
Bass Extension	20 Hz +/- 3 dB
Finish	Black piano, Walnut burl piano
Dimensions WxHxD, mm	480 x 980 x 600 including feet
Enclosure WxD, mm	295 x 600
Weight, kg	64



DANTAX Radio A/S

Bransager vej 15

9490 Pandrup

Denmark

Phone: +45 98 24 76 77

www.raidho.dk

Email: sales@raidho.dk



/RaidhoAcoustics

Find your dealer here



Raidho Acoustics

2025